



FOR IMMEDIATE RELEASE:
December 14, 2021

COVID-19 Update for Montgomery County

Status Update from the Office of Homeland Security and Emergency Management

MONTGOMERY COUNTY – Montgomery County Public Health District, in conjunction with the Montgomery County Office of Homeland Security and Emergency Management, would like to continue to encourage eligible residents to be vaccinated for COVID-19.

Today marks one year since the first vaccine was given in the U.S. Every new emerging variant emphasizes the need for vaccinations and booster shots for eligible populations. Need to find a vaccine or a vaccine booster shot? Click here for vaccine sites: <https://www.vaccines.gov/>.

Just a reminder, since the transition to the NEDSS database managed by the CDC, we have standardized our reporting to match Department of State Health Services (DSHS) reporting. All data definitions are now consistent with DSHS. They can be found here: <https://dshs.texas.gov/coronavirus/DataDefinitions.aspx>.

We report weekly on Tuesdays, but DSHS updates daily at this link: <https://www.arcgis.com/apps/dashboards/45e18cba105c478697c76acbbf86a6bc>.

Since our last report on
12/7/2021:

- TOTAL cases of COVID-19 increased by 790 to 90,353. **Total cases include confirmed (PCR testing) and probable (antigen testing) cases.*
- ACTIVE cases of COVID-19 increased by 238 to 1,129 (estimated per DSHS definitions).
- 1,122 deaths in Montgomery County residents are related to COVID-19 since the start of the pandemic in March 2020, according to data from DSHS.

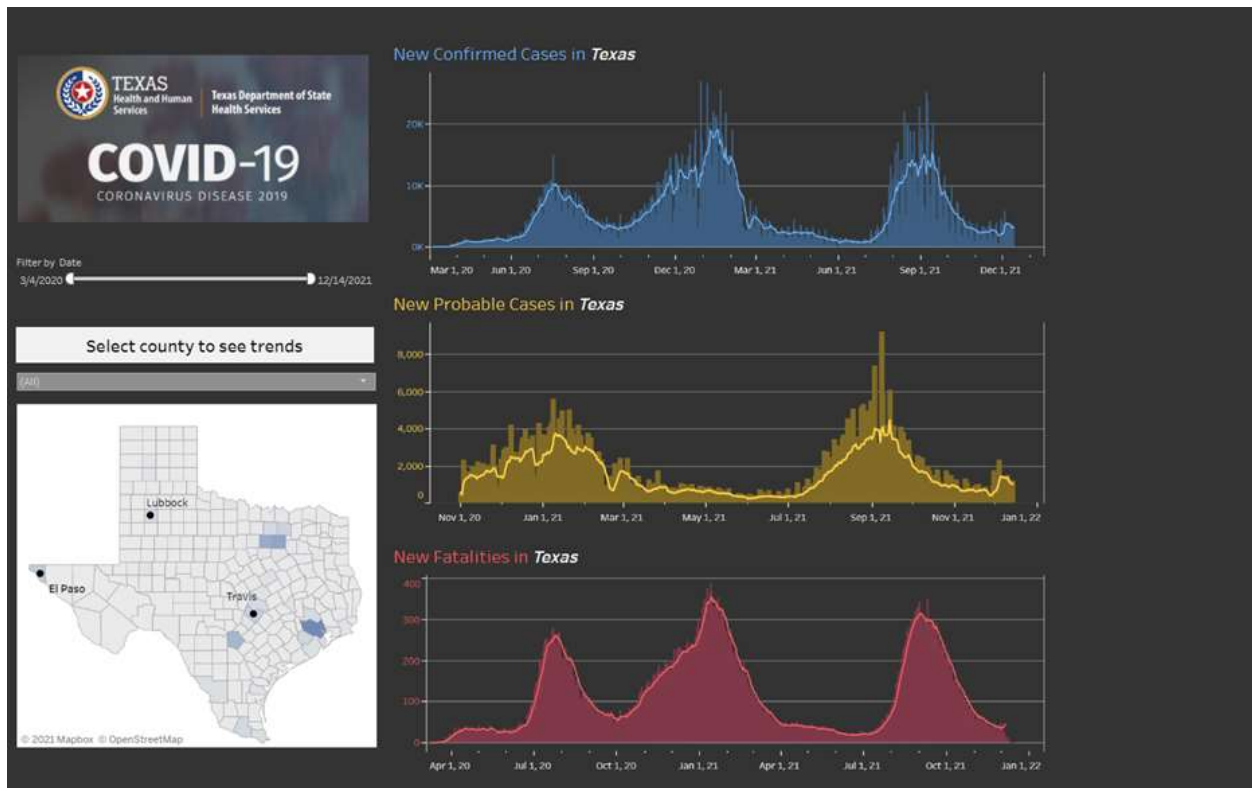
- 49 confirmed cases of COVID-19 are hospitalized in Montgomery County. SETRAC data for regional hospitalizations can be found here: <https://bit.ly/3jwhdiV>.

- 88,101 people have clinically recovered (estimated per DSHS definitions).

Please note: Following a Dec. 1 change in the process for gathering and reporting county-level COVID-19 case counts, DSHS discovered that cases with a missing county of residence were not showing up in the new case counts on the COVID-19 dashboard. To correct this error, 16,884 new confirmed cases and 4,023 new probable cases reported Dec. 1-9 were added to statewide and county totals. An “incomplete address” line has been added for cases with a missing address in the lab report. The issue did not affect the case positivity rate or prevent local jurisdictions from being notified of new cases in their areas.

The Testing Positivity Rate for Montgomery County remains at 5% today.

Source: UT Health, School of Public Health



The COVID-19 dashboard for Montgomery County can be found here: <https://coronavirus-response-moco.hub.arcgis.com/>.



Public Health
Prevent. Promote. Protect.

December 14, 2021
Residents of
Montgomery Co.,
TX



COVID-19 VACCINATIONS

Fully Vaccinated: 317,935
Total Population 5+: 562,022
Vaccination Rate: 56.57%

SOURCE: TX DSHS

Do your part to slow the spread of COVID-19. The best way to protect yourself and those around you is to be vaccinated. You should also:

- *Avoid groups of people.*
- *Practice social distancing.*
- *Wear a mask in public (over your nose and mouth) or with others who live outside your household. Never share a mask with others.*
- *Wash your hands or use hand sanitizer frequently.*
- *Disinfect surfaces in your car and around your home.*

###

Meghan Ballard Arthur

Homeland Security Planner and Public Information Officer
Montgomery County Office of Homeland Security & Emergency Management
9472 Airport Road Conroe, Texas 77303

O: 936.523.3907 | C: 936.522.6571

Sign up for [AlertMCTX](#)

Follow MCOHSEM on social media [Twitter](#) | [Facebook](#) | [Instagram](#)