

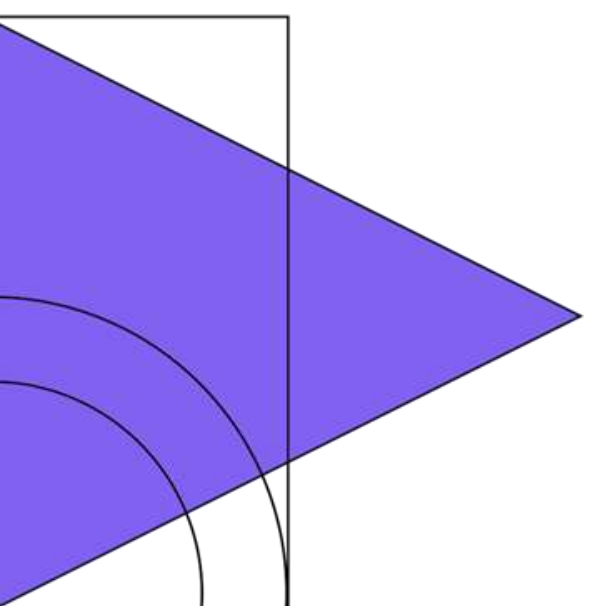
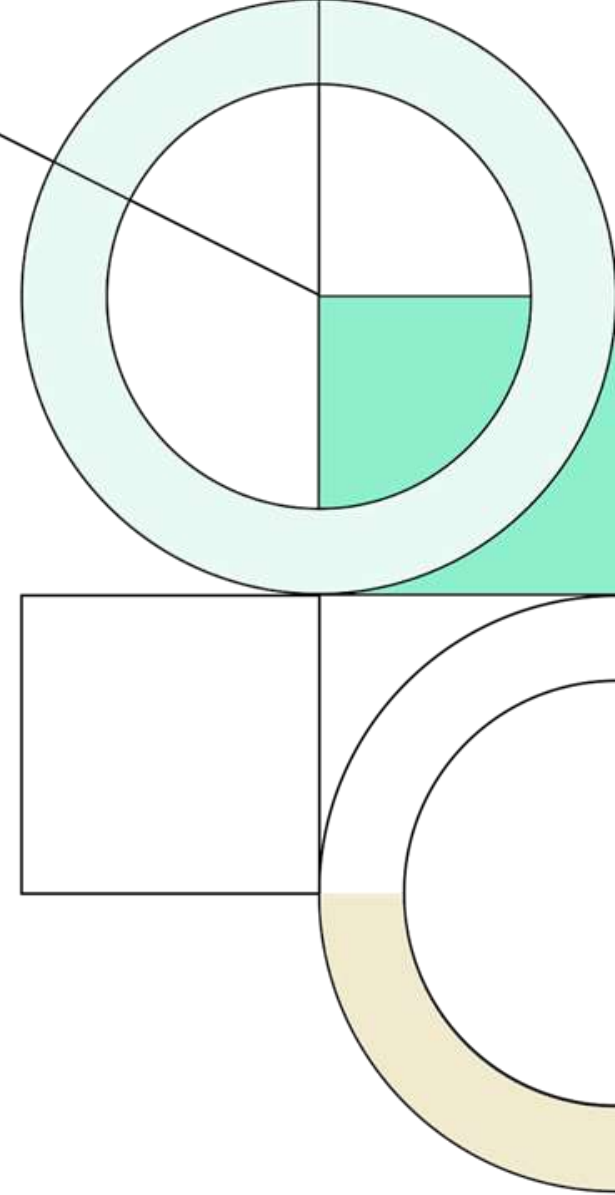


# Attendance Boundary Adjustments in The Woodlands

The Woodlands Township  
Board Meeting  
March 24, 2022



Demographic  
Report  
March 7, 2022



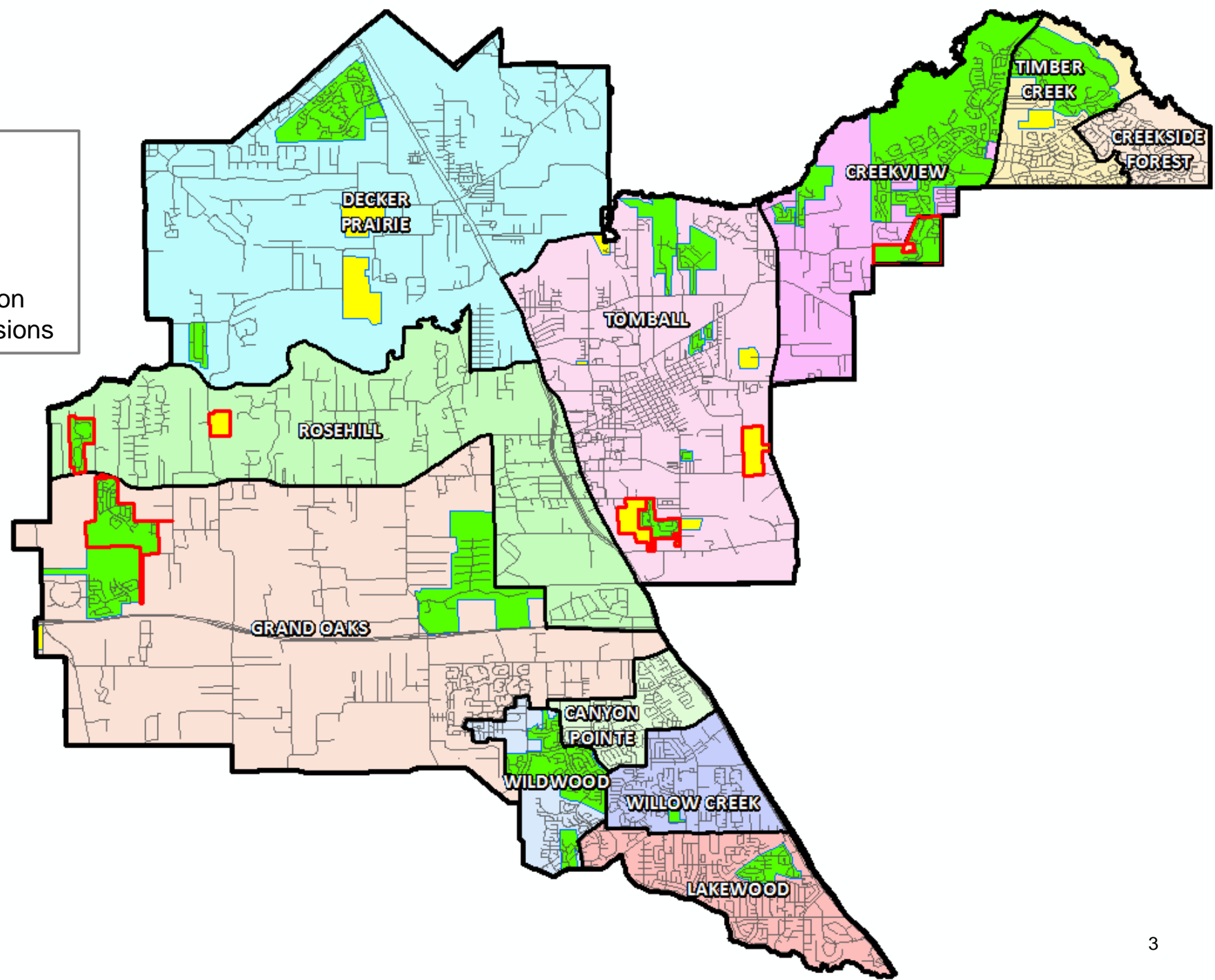


# District Housing Overview

- The district has 24 actively building subdivisions
- Within TISD there are 10 future subdivisions
- Of these, groundwork is underway on more than 500 lots within 7 subdivisions

**Subdivisions**

- ACTIVE
- FUTURE
- Groundwork Underway





# Ten Year Forecast by Elementary Campus

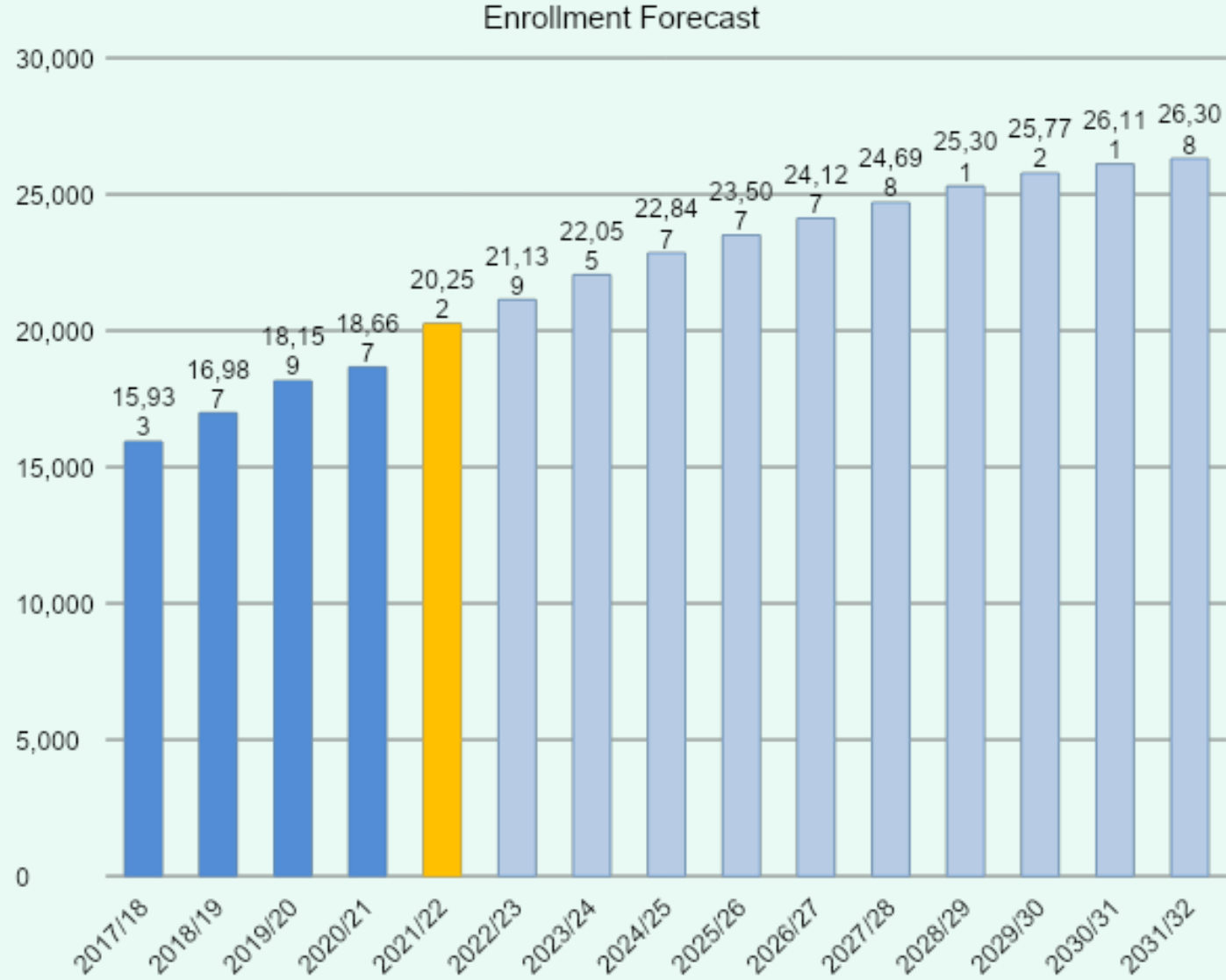
Campus	Capacity	Fall	ENROLLMENT PROJECTIONS									
		2021/22	2022/23	2023/24	2024/25	2025/26	2026/27	2027/28	2028/29	2029/30	2030/31	2031/32
Canyon Pointe Elementary (KG-4th)	856	773	742	734	742	741	748	758	770	784	787	783
Creekview Elementary (KG-5th)	920	1,017	1,095	1,134	1,119	1,117	1,099	1,105	1,110	1,114	1,122	1,128
Decker Prairie Elementary (KG-4th)	856	736	761	777	832	900	962	1,008	1,049	1,045	1,047	1,053
Lakewood Elementary (KG-4th)	886	816	793	760	734	720	737	753	768	777	792	803
Rosehill Elementary (KG-4th)	866	654	711	781	788	783	788	786	781	783	784	783
Tomball Elementary (KG-4th)	866	795	856	868	890	931	956	979	1,000	1,026	1,050	1,072
Willow Creek Elementary (KG-4th)	866	734	747	736	746	775	780	781	787	790	791	799
Creekside Forest (KG-5th)	714	572	566	560	526	510	495	495	502	501	503	510
Timber Creek Elementary (KG-5th)	920	730	771	783	823	824	838	848	856	867	880	892
Wildwood Elementary (KG-4th)	920	837	828	844	836	842	863	877	888	898	899	900
Grand Oaks Elementary (KG-4th)	920	867	1,020	1,133	1,237	1,290	1,317	1,364	1,361	1,375	1,394	1,403
<b>ELEMENTARY SCHOOL TOTALS</b>	9,590	8,531	8,890	9,109	9,274	9,432	9,582	9,755	9,873	9,959	10,049	10,126
Elementary Absolute Growth		825	359	219	165	158	150	173	118	86	90	77
Elementary Percent Growth		10.71%	4.21%	2.46%	1.81%	1.71%	1.59%	1.81%	1.20%	0.87%	0.90%	0.77%

Yellow box = over 105% capacity

Green box = within 5% capacity



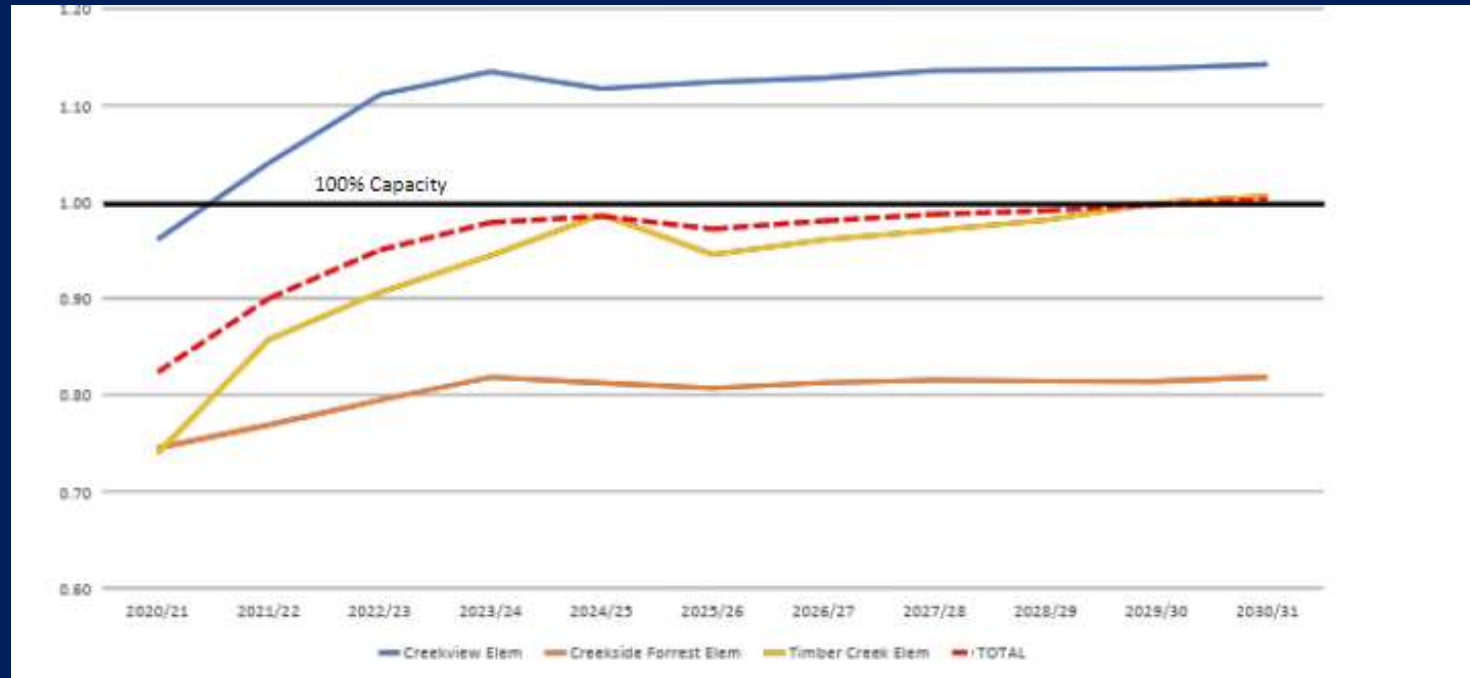
# Key Takeaways



- Tomball ISD increased by 1,585 students this fall for a 8.5% growth rate
- TISD had a historically large increase in KG, 1st, 4th, 7th, 8th, 9th, and 12th enrollment
- The district has 24 actively building subdivisions and 10 future subdivisions
- TISD will enroll approx. 24,100 students for the 2026/27 school year, and likely 26,000 by 2031/32

# Why are we Rezoning?

- Fast Growth District
- Building Utilization & Capacity



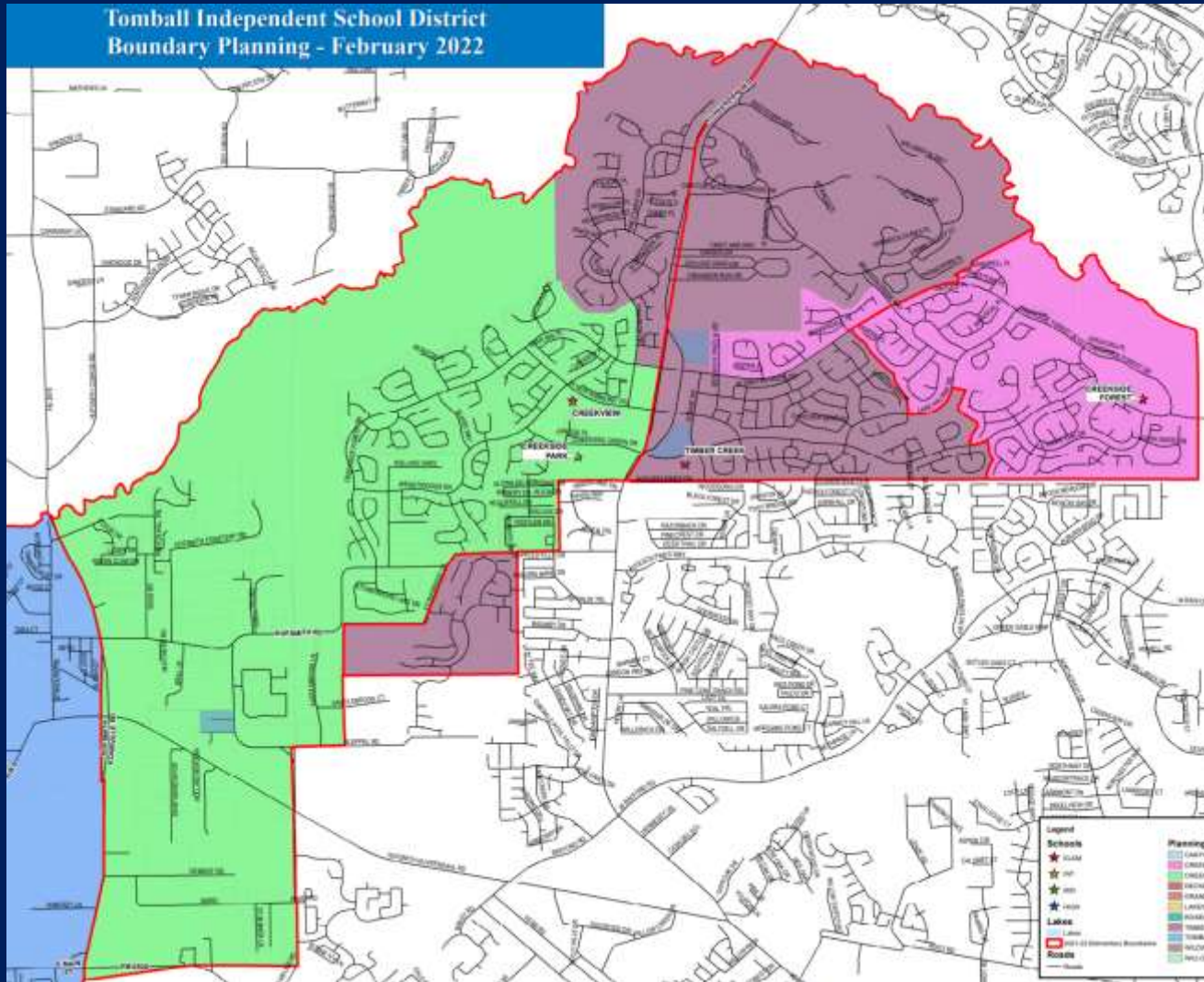
- Delayed Boundary Adjustment
  - Difficult but Necessary Decision

# Process

- Begin with a “Starter Map” provided by demographer
  - The map shows the number of elementary aged students that attend in that planning area and zone
- Preliminary boundaries are based on data, guiding principles and target utilization & number of students
  - Need to examine the short and long term implications of boundary adjustments
- Administrative recommendation, always Board approval

# Plan A

## Map & Forecast Enrollment



Plan A Projected Enrollment

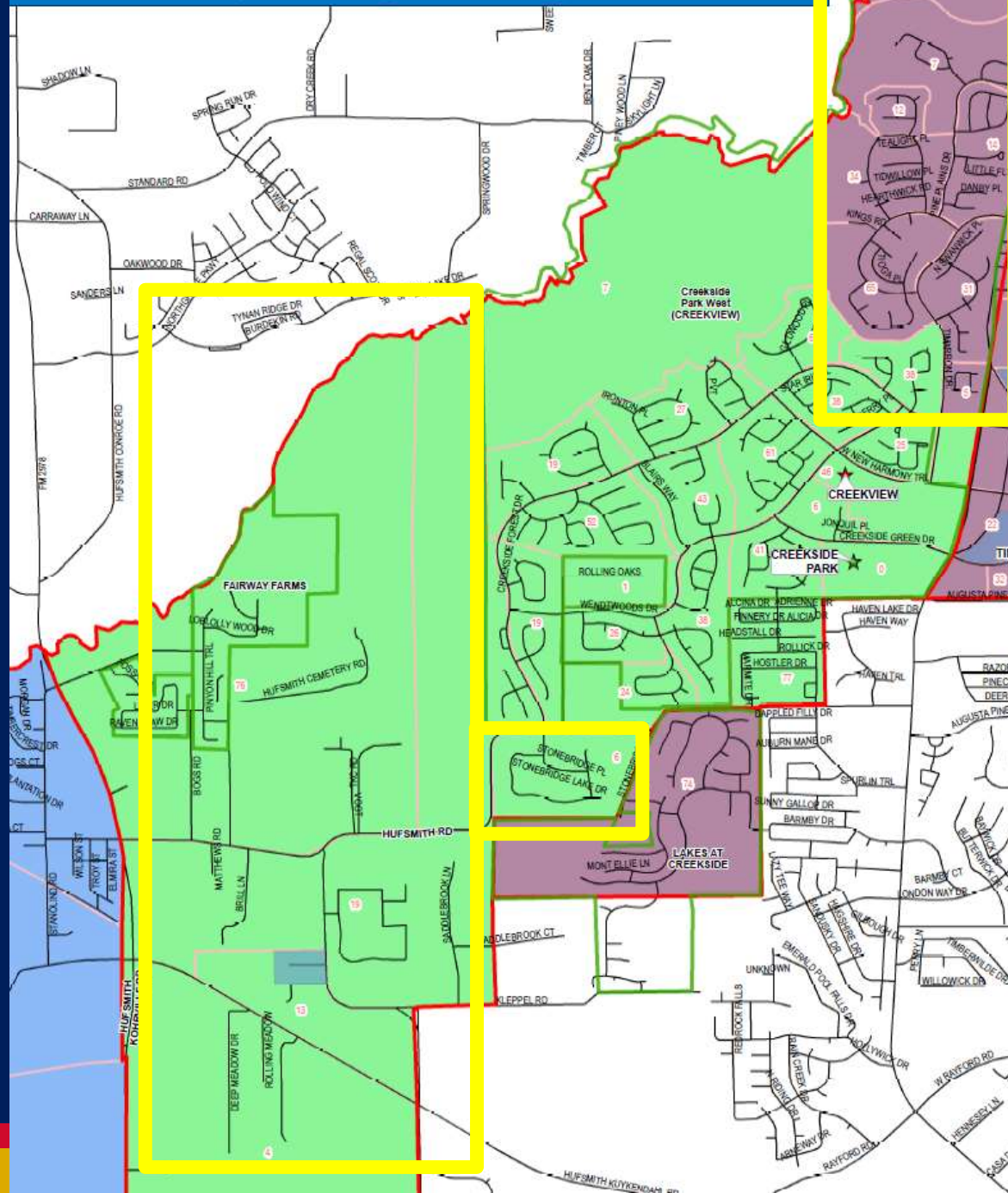
CAMPUS	Capacity	2020-21	CURRENT	ENROLLMENT PROJECTIONS					
			2021-22	2022-23	2023-24	2024-25	2025-26	2026-27	
Creekside Forest Elementary	714	537	577 81%	681 95%	690 97%	673 94%	667 93%	660 92%	
Creekview Elementary	920	896	1,057 115%	922 100%	949 103%	960 104%	967 105%	957 104%	
Timber Creek Elementary	920	617	755 82%	884 96%	895 97%	912 99%	911 99%	915 99%	



# Biking & Walking Safety

- The safety of our student is of utmost importance. We understand the concern of crossing Kuykendahl
- Current path, extra distance, Transportation Services
- Short-term and long-term pedestrian safety solutions
- With the growth in the District and within the Creekside area, a neighborhood will inevitably have to cross Kuykendahl.

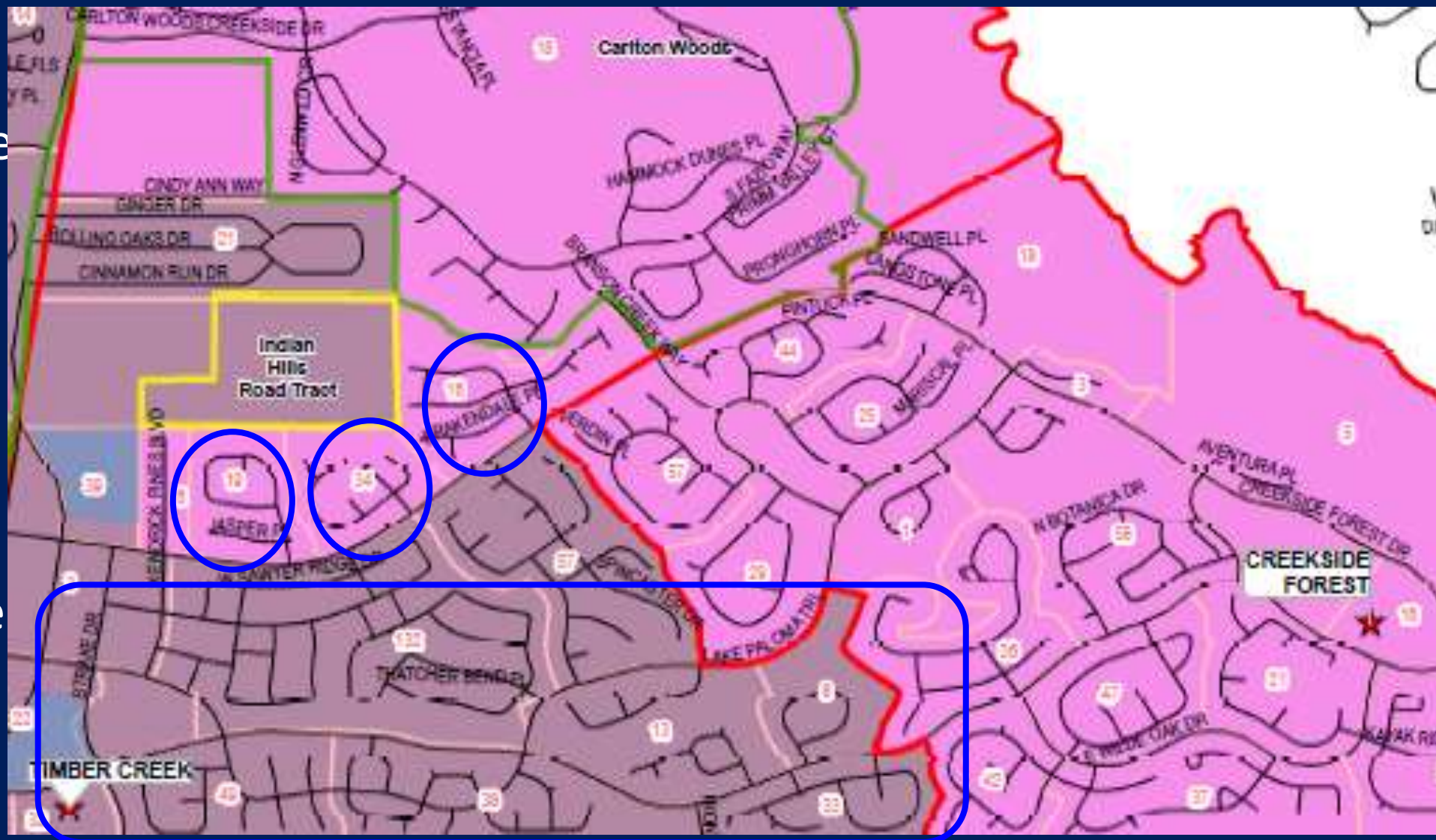




- 118 students
- Active & future building
- Does not provide sufficient overcrowding relief from CES

- 168 students
- No future builds
- Provides closer balance between CES, CFES & TCES

- Shaded Arbor, Canoe Bend & Lake Voyager are self-contained sub-divisions
  - Contiguous nature of Spincaster & Liberty Branch
- Collectively, these sub-divisions provide sufficient enrollment relief to TCES



# NOVEMBER 2 BOND ELECTION?

Community voters did have an opportunity to vote on a \$567,560,000 bond proposal on November 2, 2021.

The bond proposal will be presented to voters in five separate propositions on the ballot.

**A**

New Schools and Facilities, Infrastructure, Renovations, Transportation, Technology, and Security Updates

**B**

Technology for Staff and Students

**C**

Athletic Upgrades

**D**

Natatorium

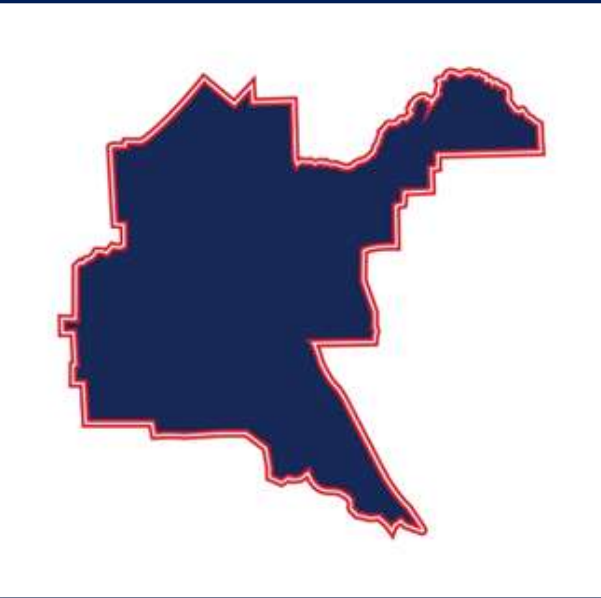
**E**

Fine Arts and Athletics Multi-use Facilities

# Bond 2021

- Proposition A does include two elementary schools to provide enrollment relief to the following schools
  - Juergen Rd: projected 2024-25
    - GOES, RES, DPES
  - Tomball Innovation Center: 2026-27
    - CES, CFES, TCES, TES
- Also keeping new school boundaries and potential future adjustments in consideration

# Questions?



THANK YOU!